

## User Manual

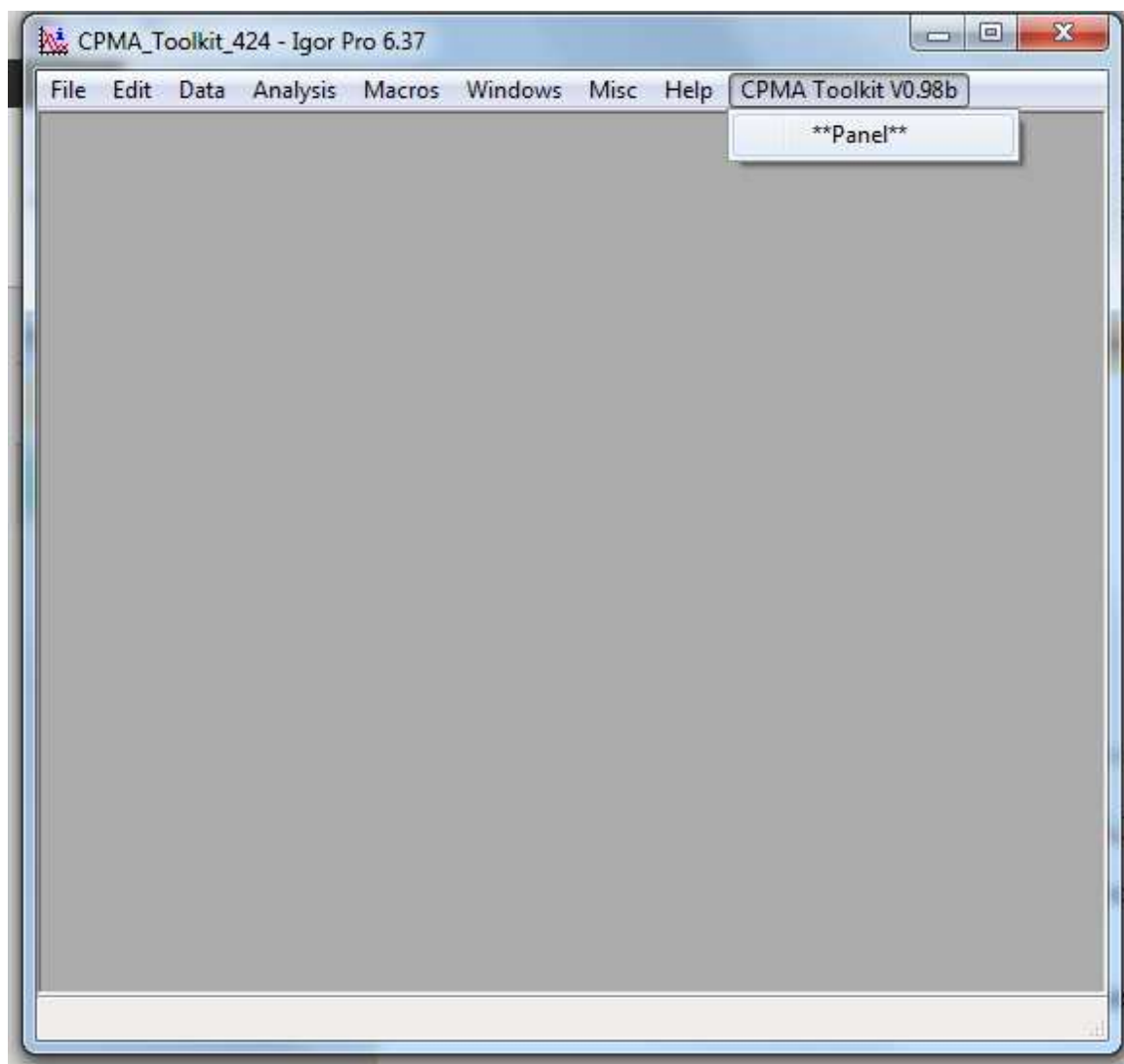
Requirements: IgorPro 6.01 or higher

Options for installation: Standalone toolkit, or inclusion into existing toolkit.

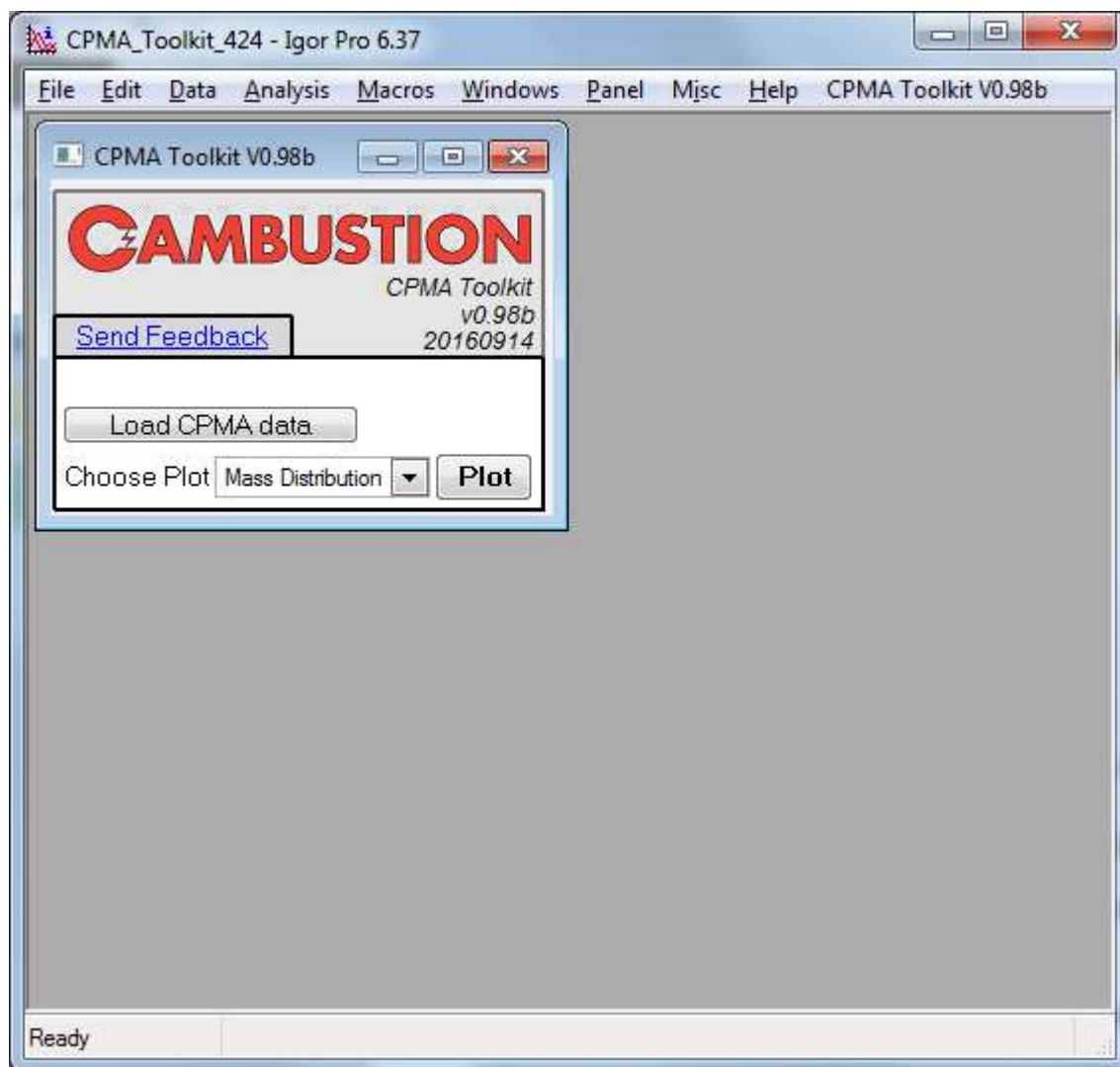
For standalone toolkit, simply download and run CPMA\_Toolkit\_vXXX (where XXX is the version number)

For inclusion into existing Igor Pro toolkits, copy the procedure file to your Igor Pro User Procedures folder, and double-click to install.

The toolkit panel is activated from a dropdown menu labelled "CPMA Toolkit vXXX"

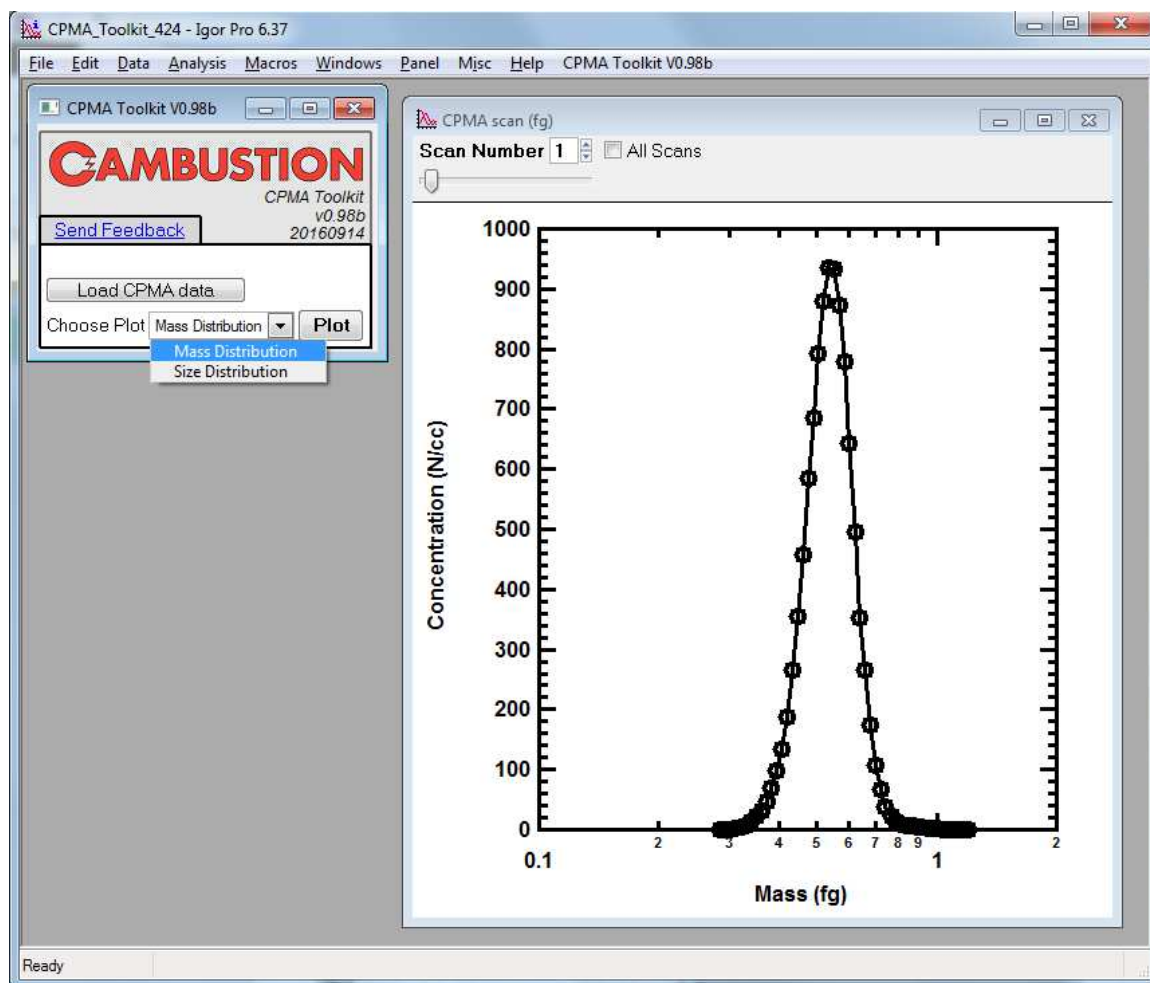


After clicking **\*\*Panel\*\*** from the dropdown menu, the toolkit panel will appear:

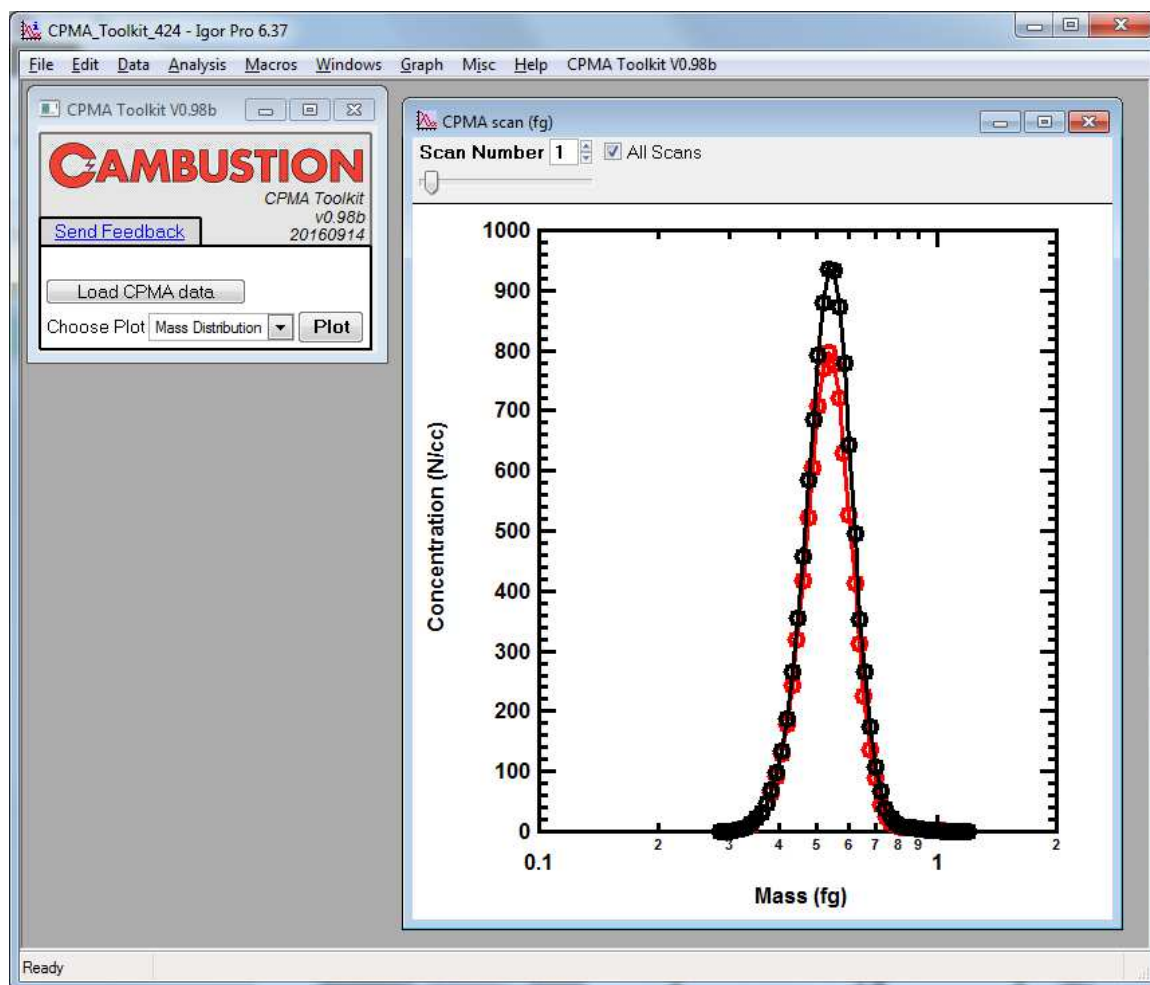


The next step is to load CPMA data into the toolkit. To do this, click "Load CPMA data" and follow the on-screen prompts to locate a .cpma file on your hard drive.

Once loaded, choose from the dropdown menu either "Mass Distribution" or "Size Distribution" and click plot:



Here, you can use the slider or click the up/down arrows to cycle through CPMA scans, or click "All Scans" to show all scans performed (additional scans appear in red as shown below)



From this point, data can be analysed further (e.g. by applying fits) or graphs exported for publication.